



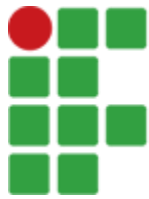
**INSTITUTO FEDERAL**  
Santa Catarina

# LibreOffice Writer

---

# Páginas e Parágrafos



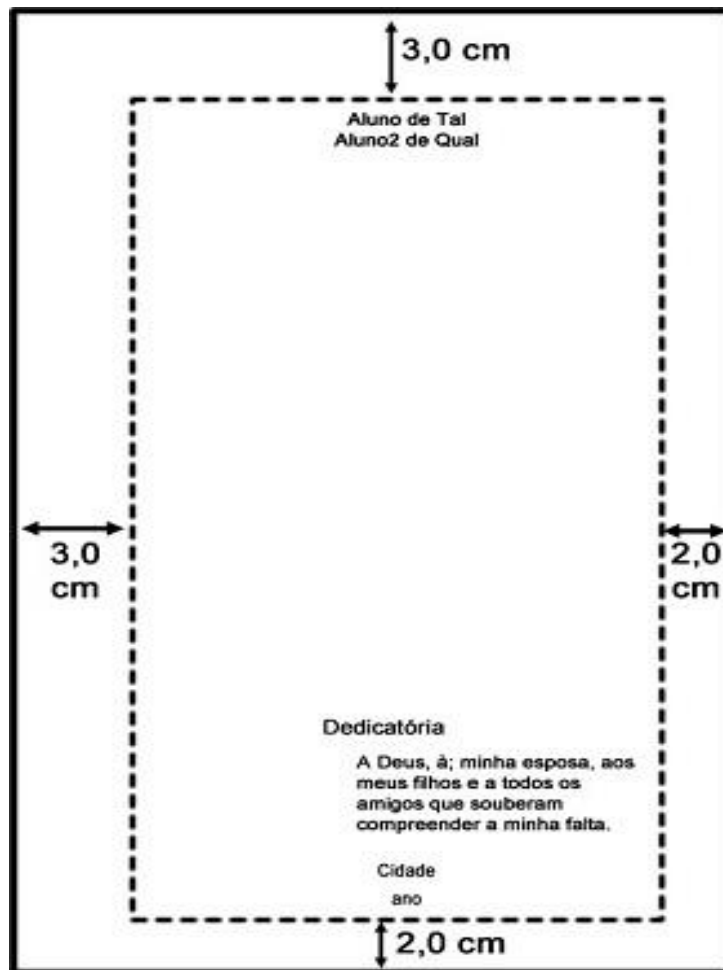


**INSTITUTO FEDERAL**  
Santa Catarina

# Formatando as margens das páginas

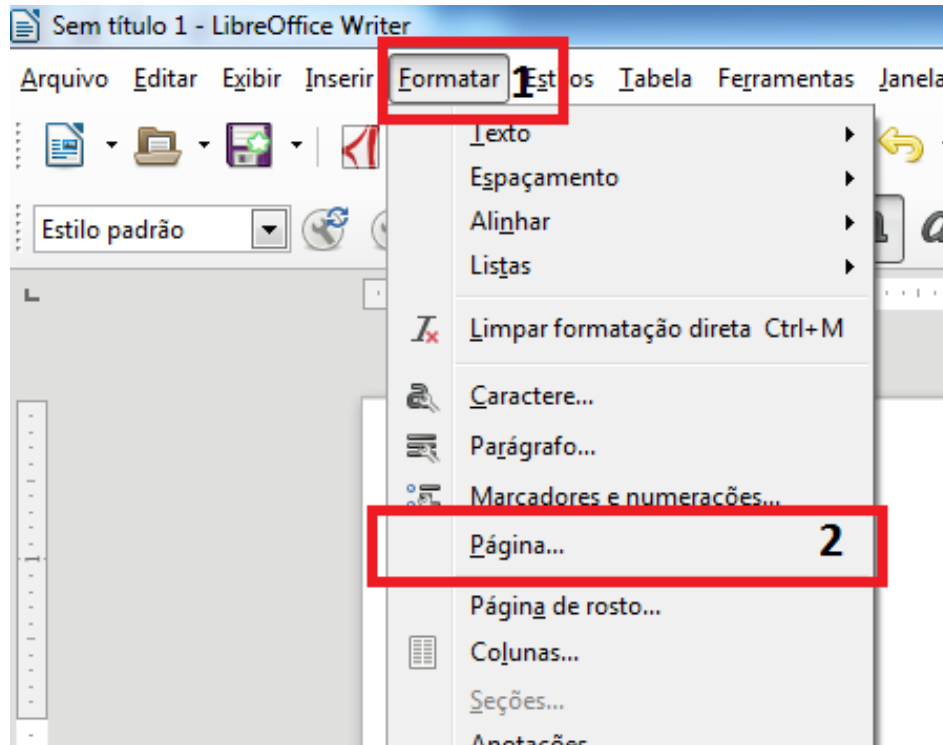
---

# Margem das páginas

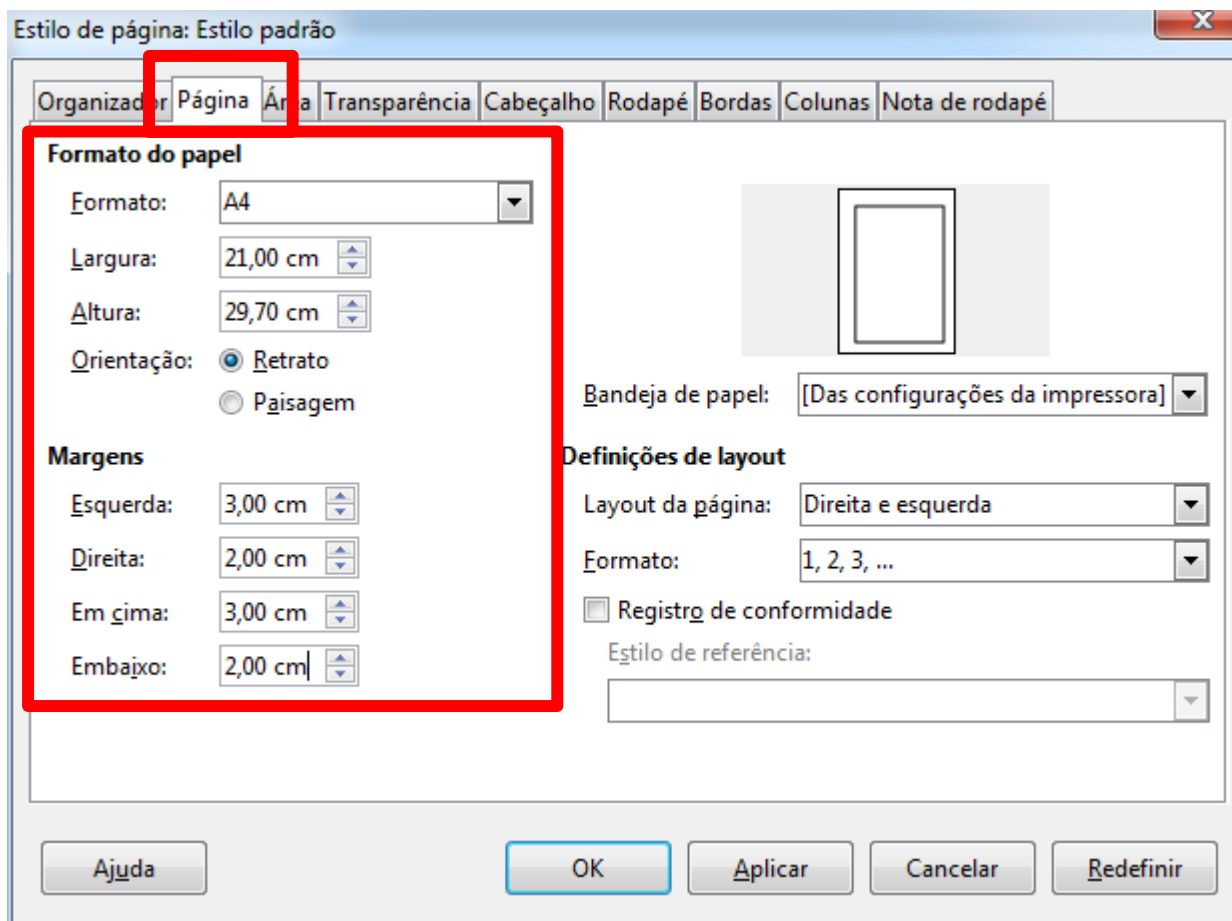


Fonte: Baseado na Norma para Apresentação de Trabalhos Acadêmicos: monografias e TCC (IFSC, 2ª ed, 2014, pág. 5)

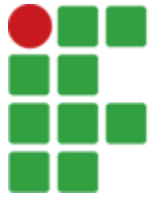
# Margem das páginas (cont.)



# Margem das páginas (cont.)



Fonte: Baseado na Norma para Apresentação de Trabalhos Acadêmicos: monografias e TCC (IFSC, 2ª ed, 2014, pág. 5)



**INSTITUTO FEDERAL**  
Santa Catarina

# Formatando parágrafos

---

# Formatando parágrafos

The image shows a word processor interface with a menu bar (Arquivo, Janela, Ajuda) and a toolbar containing various icons for text and paragraph formatting. Below the toolbar is a ruler with a scale from 1 to 18. The main editing area contains two paragraphs of placeholder text. The first paragraph is indented from the left margin. Red annotations highlight specific formatting features: a vertical line labeled 'recuo primeira linha' points to the first line's indentation; a horizontal line labeled 'Espaçamento entre parágrafos' spans the gap between the two paragraphs; a vertical line on the right labeled 'espaçamento de linha ou entrelinhas' indicates the space between the two paragraphs.

recuo primeira linha

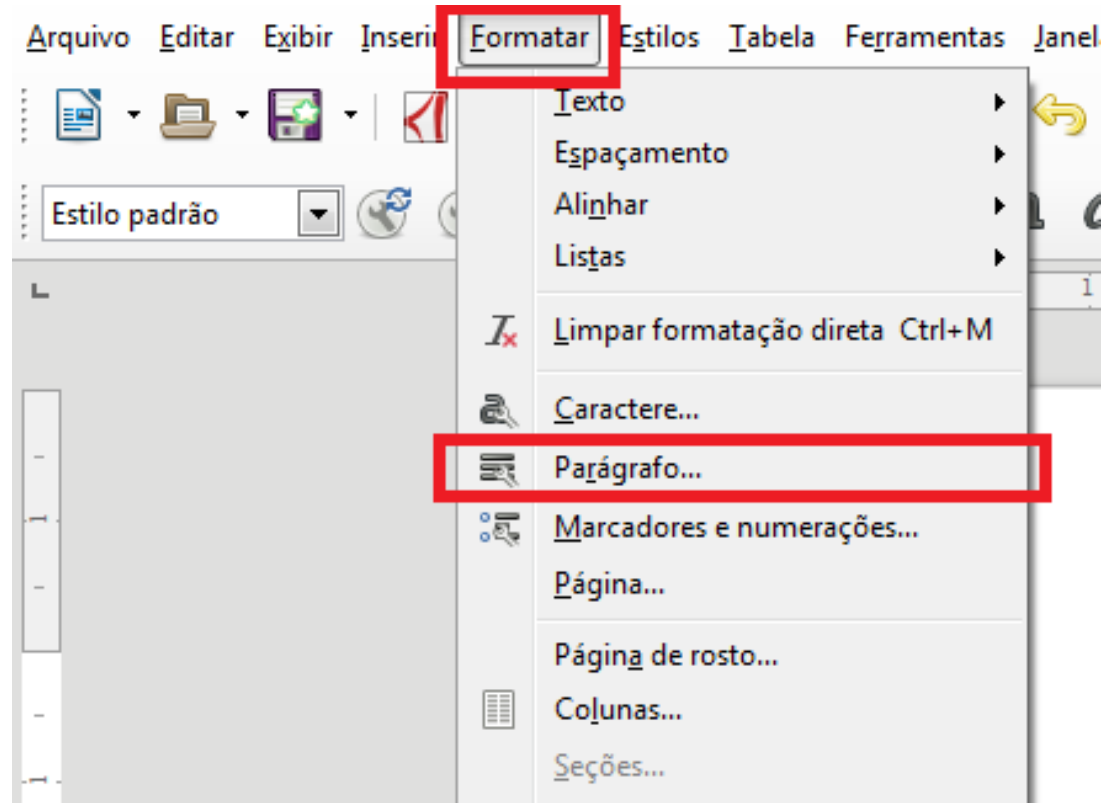
espaçamento de linha ou entrelinhas

Espaçamento entre parágrafos

Lorem ipsum dolor sit amet, consectetur adipiscing elit. Vestibulum scelerisque, est in congue malesuada, ligula risus vestibulum diam, in pretium turpis tellus eget odio. Orci varius natoque penatibus et magnis dis parturient montes, nascetur ridiculus mus. Aenean tempor mauris vitae tortor ullamcorper consectetur. Praesent faucibus at mauris placerat bibendum. Nulla molestie pellentesque hendrerit.

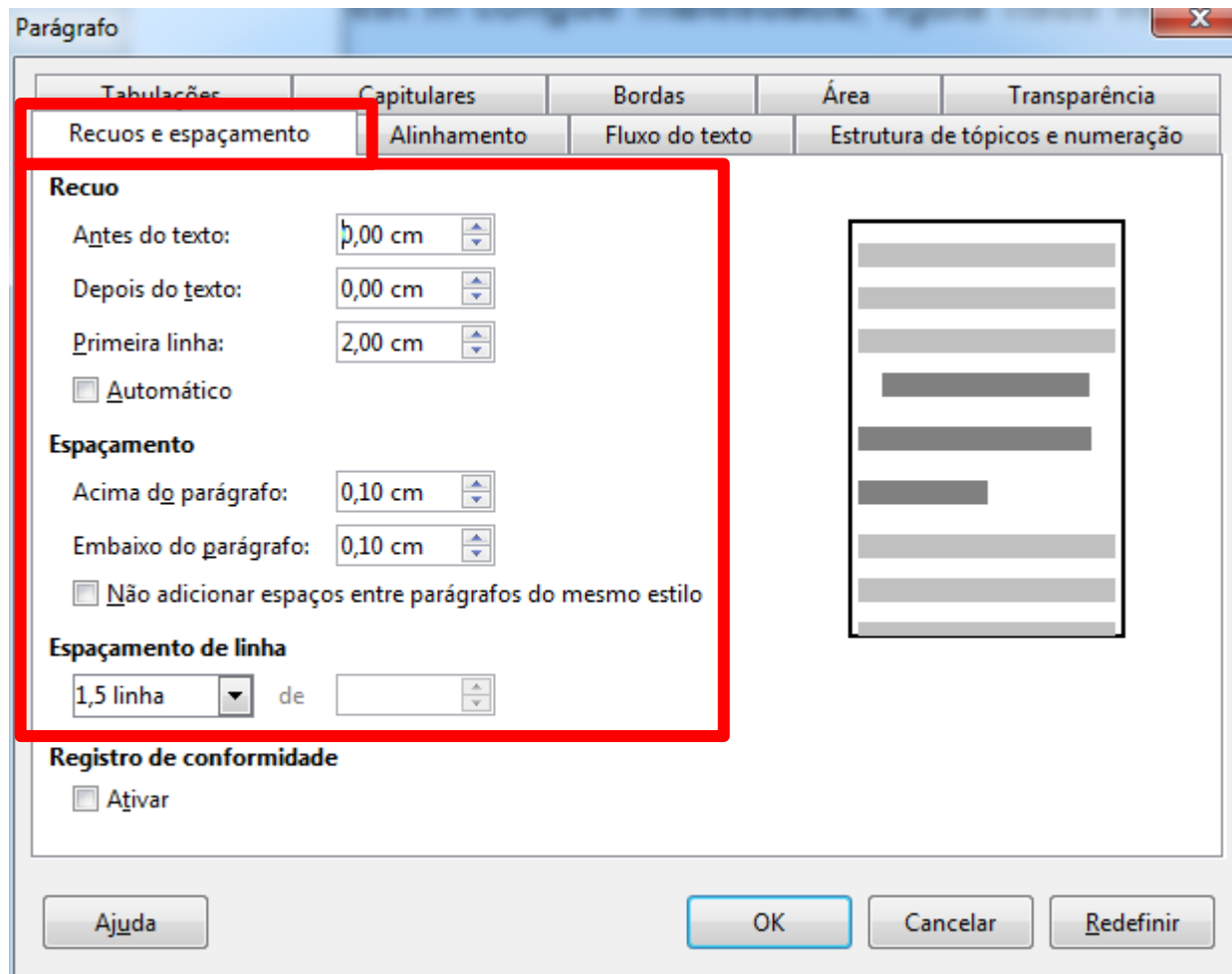
Lorem ipsum dolor sit amet, consectetur adipiscing elit. Vestibulum scelerisque, est in congue malesuada, ligula risus vestibulum diam, in pretium turpis tellus eget odio. Orci varius natoque penatibus et magnis dis parturient montes, nascetur ridiculus mus. Aenean tempor mauris vitae tortor ullamcorper consectetur. Praesent faucibus at mauris placerat bibendum. Nulla molestie pellentesque hendrerit.

# Formatando parágrafos (cont.)





# Formatando parágrafos (cont.)

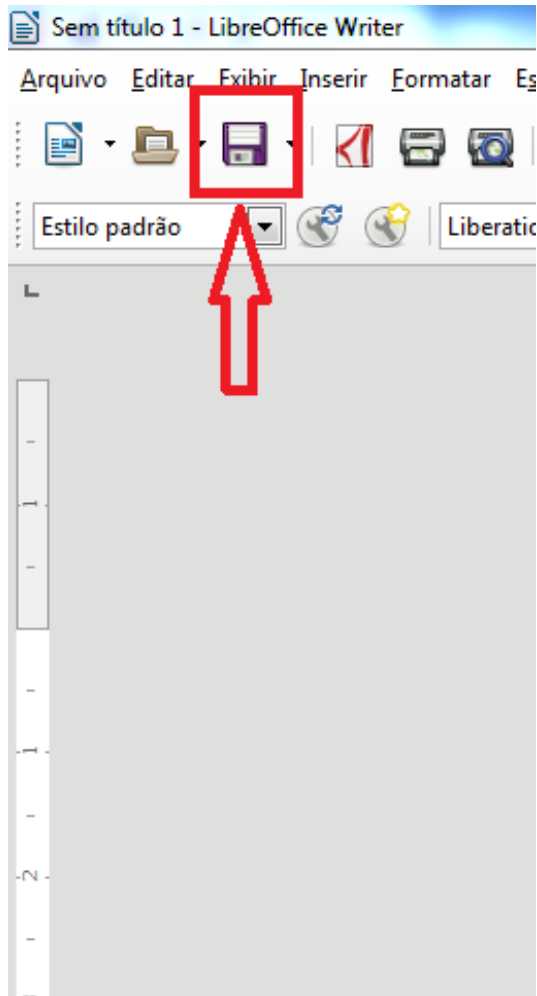


Fonte: Baseado na Norma para Apresentação de Trabalhos Acadêmicos: monografias e TCC (IFSC, 2ª ed, 2014, pág. 5)

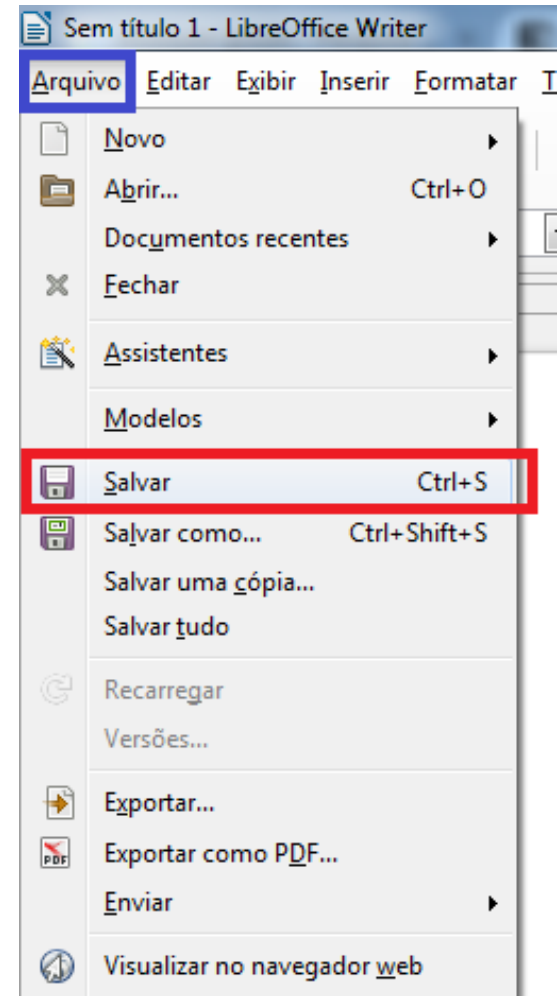
# Salvando o documento

---

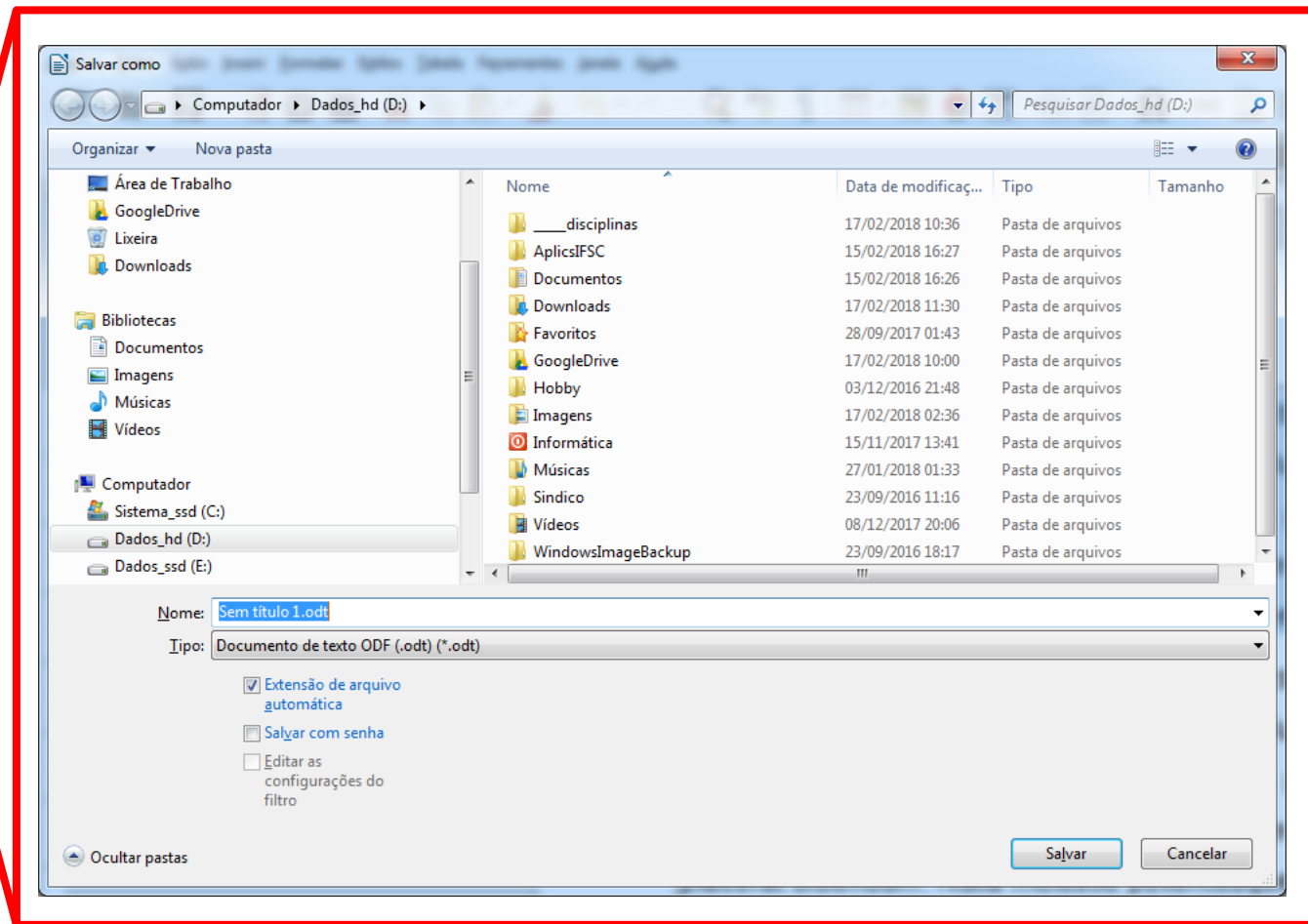
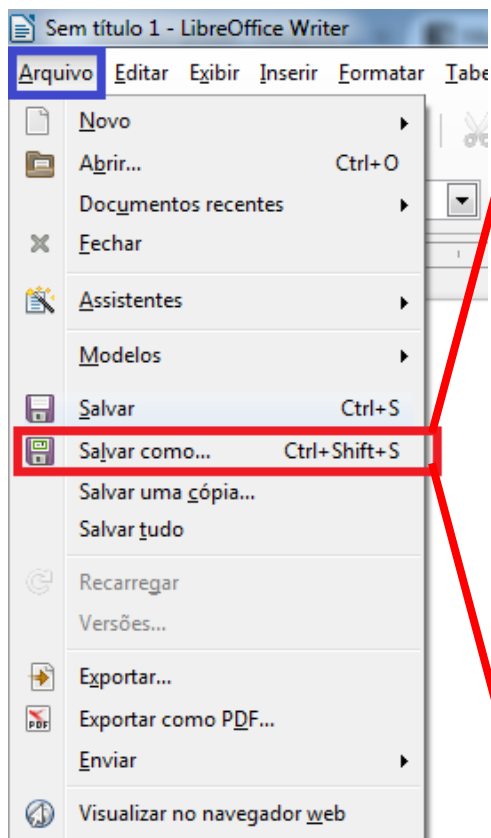
# Salvando o documento

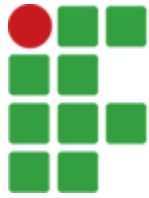


ou



# Salvando o documento (cont.)



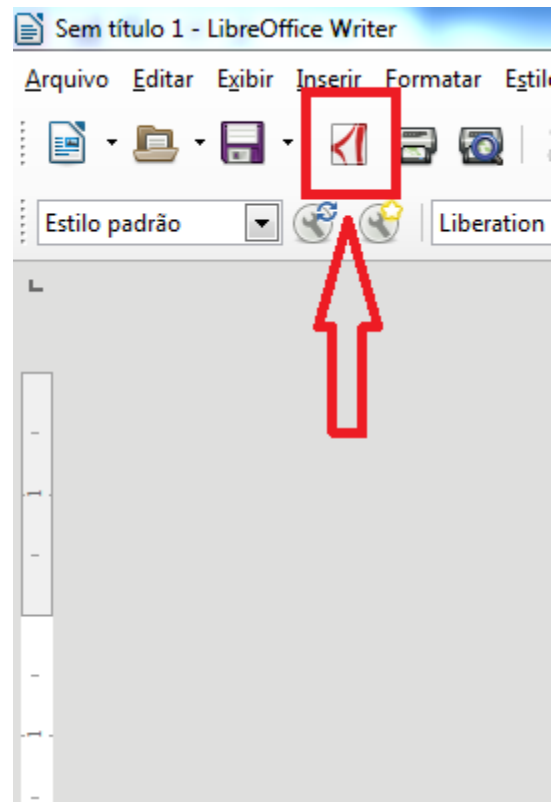


**INSTITUTO FEDERAL**  
Santa Catarina

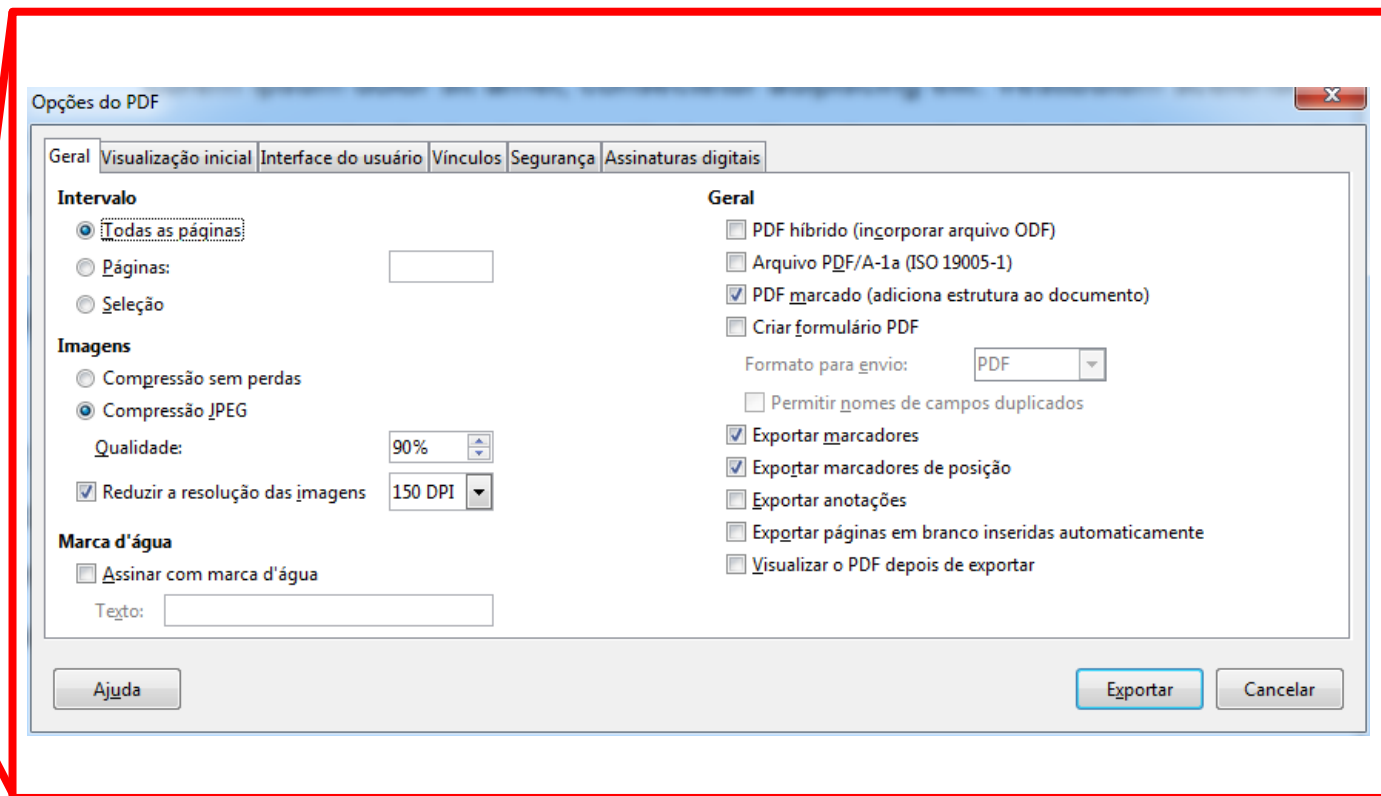
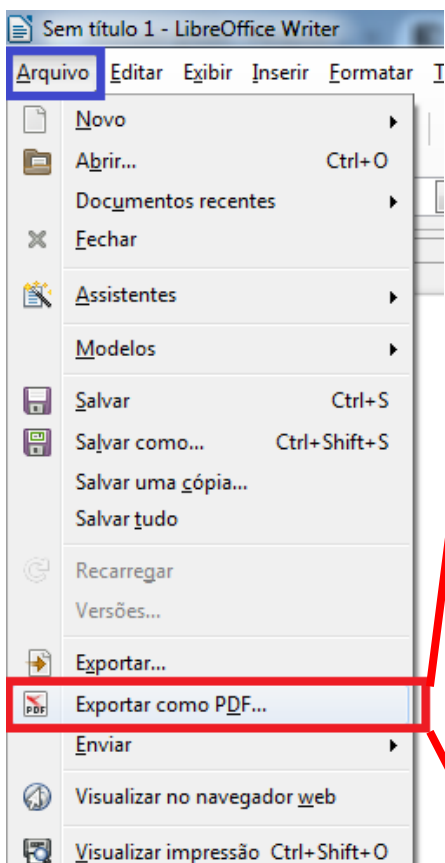
Salvando em PDF

---

# Salvando em PDF



# Salvando em PDF (cont.)





**INSTITUTO FEDERAL**

Santa Catarina

---

Obrigado!